



SunLion Head Office (尚林国际总部)

Add: Floor 5, Baoyang Road (Kaihe Square, BLD 1),
Baoshan district, Shanghai, China

中国上海市宝山区宝杨路3003号凯和阳光广场1号楼505室

Tel: +86-21-6173 5712

E-mail: Bill@sunlionpiping.cn

Sales Dept: 1688@sunlionpiping.cn

SunLion North America (尚林国际*加拿大):

Add.: 4255 Arbutus Street, Unit #147, PO Box 62025, Vancouver, Canada
Email : 1688@sunlionpiping.cn

SunLion Australia (尚林国际*澳洲):

Add: 1707 Post Oak Blvd., #449 Houston, TX 77056
Tel:+001(832) 598 4456

E-mail: 1688@sunlionpiping.cn

SunLion Indonesia (尚林国际*印尼):

Add.: Metro Sunter Apartment 108, Sunter Jakarta 14340, Indonesia.
Email : 1688@sunlionpiping.cn

SunLion Korea (尚林国际*韩国):

Add.: #D205 Environmental Industry Research Complex 410 Jeongseo-
jin-ro, Seo-gu, Incheon, Republic of Korea.
Email : 1688@sunlionpiping.cn

SunLion India (尚林国际*印度):

Add.: 25-C, Sonarika Apartment Basement, Office No.16-A,
Mumbai-400004, Maharashtra.
Email : 1688@sunlionpiping.cn

SunLion Thailand (尚林国际*泰国):

Add.: No.2010, 20F, Le Concorde Tower, Ratchadapisek Road , HuaiKwang
District, Bangkok 10310, Thailand
Email : 1688@sunlionpiping.cn

SunLion Thailand Factory (尚林国际*泰国工厂):

PETROLEUM EQUIPMENT (THAILAND) CO., LTD.
Add.: 7/522 Moo.6 Mabyangporn, Pluakdaeng, Rayong 21140, Thailand.
Email : 1688@sunlionpiping.cn

SunLion R&D Center

江苏尚大海洋工程技术公司

SunLion CNAS Laboratory

尚林(苏州)CNAS检测实验室

SunLion Tianjin Stock Warehouse

沧州尚林管道工程有限公司

www.sunlionpiping.cn

www.sunlionpiping.cn

Steel Structure and Piping Supply Chain of EPC Projects
EPC 项目 * 钢结构与管道集成供应链





CONTENTS

目录

- 03 | Brief Introduction
公司简介
- 06 | Accreditations & Qualifications
认证与资质
- 07 | Products & Services
产品与服务
- 17 | History Projects
工程业绩
- 25 | Why Us
核心竞争力
- 31 | Main End Users
主要客户

BRIEF INTRODUCTION

公司简介

SunLion Group is devoting to be one of the respected global Piping and Steel Structural Modules Providers to Oil & Gas transportation, Refinery & Chemical, Quay wall and Berth, Marine & Offshore, Nuclear & Wind Power, Mining markets with our unique, integrated approach that enables us to deliver modular solutions to world leading Energy Companies and EPC contractors.

尚林集团致力于成为一家受人尊敬的全球管道和钢结构模块服务商，在石油和天然气运输、炼油和化工、海工码头、核能和风能、矿业领域，为世界领先的能源公司和EPC总承包商提供一站式、模块化的解决方案。

Throughout more than 15 years efforts in the international markets, SunLion has successfully entered into Mid-east, Australia, America, Africa and Europe markets, providing piping system materials and serving for SIEMENS, SABIC, KOC, ADNOC, TITAS, GTCL, EIL, BHEL, FLUOR, VINCI, NNPCTECHNIP, PETRONAS, PDVSA, SHELL, ODEBRECHT, MCCONNELL, VOPAK, SUMSUNG, SK, GS, etc.

经过超过15年的国际市场打拼，尚林已成功进入中东、澳大利亚、美国、非洲和欧洲市场，为西门子、沙特基建、科威特石油、阿布扎比石油、TITAS、GTCL、印度工程公司、印度电力、通用、福陆、万喜、尼日利亚石油、德希尼布、巴西石油、委内瑞拉石油、壳牌、ODEBRECHT、麦德建筑、VOPAK SUMSUNG、SK、GS等提供管道系统材料和服务。

Combined with Chinese top-class manufacturer and international engineering team

SunLion has become professional Steel Structure & Piping Module Provider

SunLion can provide pre-fabricated piping system spool and skid/structure module & the whole solution service

联合中国高端制造和国际工程团队，使得尚林已成长为一项专业的钢结构和管道模块服务商，可以提供管道预制系统、钢结构模块和整体解决方案。

Established long-term strategic relationship with the pipe mills of CNPC BSG Group, Valin, CITIC, Baosteel, and NISCO, SunLion has become the top class Steel Structure and Piping Material Exporting Supplier in China.

SunLion can supply Steel Structure/SMLS/Welded/OCTG pipe & Fitting/Flange/Valve & Stainless Products.

与中石油宝钢钢管集团、华菱钢管集团、中信泰富特钢集团、宝钢、南钢建立长期战略关系，使得尚林已成长为中国顶级钢结构和管道材料出口供应商，可提供钢结构/无缝管/焊接钢管/石油套管/管件/法兰/阀门及不锈钢制品。



Vision / 愿景

Make EPC Projects Procurement More Effective!
让EPC项目采购更有效果!



Mission / 使命

Building an Excellent Supply Chain through Integrating Engineering, Production, QA, QC and Logistics to Serve Global EPC Contractors!
整合工程设计、生产、质保、质检及物流，
打造服务国际EPC总承包商的卓越供应链!



SunLion R&D Center
江苏尚大海洋工程技术公司

SUNLION R&D CENTER

江苏尚大海洋工程技术公司

Sunda, integrating R&D with manufacture, has complete production line, advanced testing & inspection equipment and a galaxy of experienced and professional technical personnels. Focusing on the development and manufacture of corrosion-resistant materials and anti-corrosion materials applied to offshore constructions and delivering professional training in all aspects of engineering, welding and HSE.

尚林南通研发中心(Sunda)是集研发与制造于一体，拥有完整的生产线、先进的检测检测设备和一批经验丰富的专业技术人员。通过专注于开发和生产适用于离岸建筑的耐腐蚀材料和抗腐蚀材料以及提供工程、焊接和HSE方面的专业培训。

SUNLION CNAS LABORATORY

尚林(苏州)CNAS检测实验室

SunLion Testing Laboratory (Suzhou) is a company with CNAS qualification certification, have all kinds of testing instrument and auxiliary equipment more than 70 sets, use a fixed area 2000 m², is a company established in strict accordance with ISO/IEC17025 standards set metal materials test, high polymer material test, reliability test, fatigue test, nondestructive testing, all kinds of non-standard custom test for the integration of industrial products testing laboratory.

尚林(苏州)检测实验室是一家拥有CNAS资质认证的公司，拥有各类检测仪器及辅助设备70余套，固定使用场地2000m²，是一家严格按照ISO/IEC17025标准建立的集金属材料试验、高分子材料试验、可靠性试验、疲劳耐久试验、无损检测、各种非标定制试验为一体的工业品检测实验室。

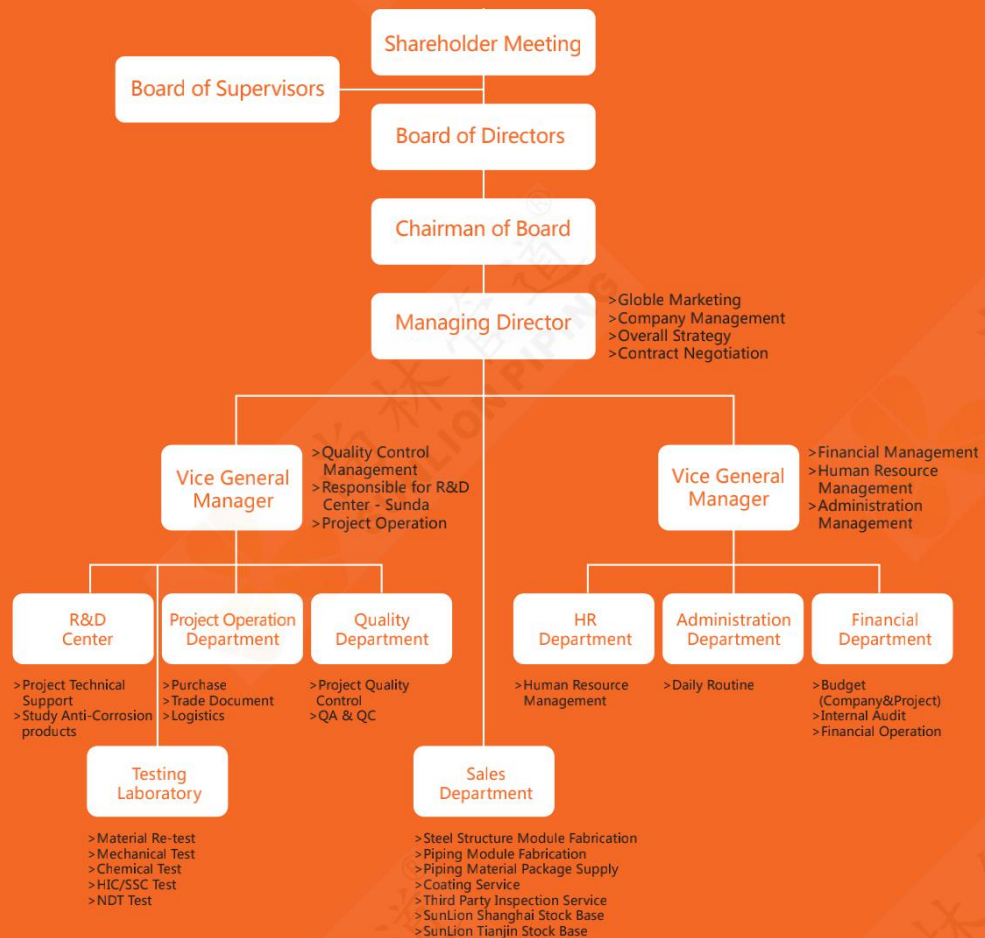


ORGANIZATION STRUCTURE DIAGRAM

组织架构图

ACCREDITATIONS & QUALIFICATIONS

认证与资质



PRODUCTS & SERVICES

产品与服务

- > **Piping Module**
管道模块
- > **Steel Structure Module**
钢结构模块
- > **Sheet Pile & Pipe Pile**
钢板桩、钢管桩
- > **Stainless Pipe**
不锈钢管
- > **Welded Pipe**
焊接钢管
- > **Seamless Pipe**
无缝钢管
- > **OCTG**
石油套管
- > **Fitting & Flange**
管件、法兰
- > **Valve**
阀门
- > **Coating Service**
防腐产品

• Module Products / 模块产品

> Piping Module / 管道模块

SUNLION combine prefabrication, detail engineering and extra services into complete solutions for both onshore and offshore installations in the chemical, power, oil & gas and other markets. Besides the specialized prefabrication of piping, SUNLION integrate multiple disciplines into the construction of modules and skids.

SUNLION将预制、详图设计和额外服务结合起来，为化工、电力、石油天然气和其他市场的陆上和海上设施提供完整的解决方案。除了专注于管道预制，我们还将多个学科集成到模块和撬块的构建之中。

Advantages in Piping Module:

- Quality of the work is easier to manage & maintain in a controlled environment. High accuracies on specified tolerances will avoid rework at site.
- Weather independent fabrication will minimize production delays.
- Prefabricated Spools are the perfect answer to severe skill & labor shortage. Users do not have to mobilize significant work force for fabrication of spools on site.
- Manufacturing in mass production, will result in lower manufacturing costs compared with site fabrication. Better control on welding parameters in controlled environments resulting in lesser probability of rework at site.
- Prefabricated Spools will entail no or little investments in fabrication & testing equipments by users. Radiography, PMI, MPI, Ultrasonic tests, Hydro tests etc. can be performed better & effectively in controlled environments.
- Prefabricated Spools will be serviced under the strict vigilance of Third Party Inspection Agencies, ensuring 100% adherence to required quality standards.
- Improved safety in better manufacturing conditions than on site. Also, fabricating spools off site means less slag, abrasive dust, smoke & other contaminants which are unacceptable in highly hygienic food processing & other industries.



• Module Products / 模块产品

> Steel Structure Module / 钢结构模块

SUNLION provides fabrication and modular construction services to Clients in diverse industries including Offshore(Deep-water ,Subsea),Onshore(Refineries, LNG, Chemicals), Infrastructure , Power & Utilities, Mining, etc.

尚林为不同行业的客户提供预制和模块化施工服务，包括离岸(深水、海底)、在岸(炼油厂、液化天然气、化学品)、基础设施、电力和公用事业、采矿等领域。

SUNLION's mill is designed for large-scale module fabrication with dedicated facilities including:

- Steel Fabrication
Fabricated steel is cut and assembled to project design requirements in the state-of-the-art steel cutting workshop.
- Structural Welding
All welding is conducted in this new facility to project-engineering specifications.
- Blast & Painting
After steel cutting and fabrication, items are sent to blasting and painting buildings, which have a climate-controlled and vacuum cleaning system for efficient processing.

SUNLION can supply the structure modules such as Jackets, Berthing Dolphins, Mooring dolphins, Bridge etc.



• Sheet Pile & Pipe Pile / 钢板桩、钢管桩

Sheet Pile	
Standards	SLZ/SLU/SLHZ/SLOZ/SL Straight series
Design	EN10248/EN10249
Pipe Pile	
Type	ERW/SSAW/LSAW
Design	457mm-2000mm



• Stainless Pipe / 不锈钢管

Material	Ferritic,(Super)Austenitic, (Super)Duplex, Corrosion & High Temperature Resistant Alloys,Clad,Titanium,Nuclear Grade
Diameter	6mm-2200mm
Wall Thickness	0.5mm-80mm
Service	Sour Service, NACE MR0175/SO15156, NACE MR0103
Delivery Condition	Hot Piercing, Hot Extrusion, Cold Finished



• Welded Pipe / 焊接钢管

> ERW / HFW Pipe

Standards	GB/T 9711,API Spec 5L,ISO 3183, GB/T 3091 ,EN10220,EN10217,DIN 1626, DINB2458,JIS G3445,JIS G3444,BS1387, AS/NZS 1163 and other technical requirement by end-user.
Diameter	21.3mm-660mm(1/2"-26")
Wall Thickness	0.6mm-19.9mm(0.024"-0.783")
Steel Grade	API PSL1: A, B, X42-X70 API PSL2: BM, X42-X80M EN:S235-S450
Length	DRL
Coating	DIN 30670/30678, CSA Z245, AWWA C210



> SSAW / SAWH Pipe

Standards	GB/T 9711,API Spec 5L,ISO 3183, GB/T 3091 ,EN10220,EN10217,DIN 1626, DINB2458,JIS G3445,JIS G3444,BS1387, AS/NZS 1163 and other technical requirement by end-user.
Diameter	219mm-3505mm (8"-138")
Wall Thickness	5mm-25.4mm (0.2"-1")
Steel Grade	API PSL1: A, B, X42-X100 API PSL2: BM, X42M-X100M EN:S235-S450
Length	6m-80m
Coating	DIN 30670/30678, CSA Z245, AWWA C210



> LSAW / SAWL Pipe

Standards	GB/T 9711,API Spec 5L,ISO 3183, GB/T 3091 ,EN10220,EN10217,DIN 1626, DINB2458,JIS G3445,JIS G3444,BS1387, AS/NZS 1163 and other technical requirement by end-user.
Diameter	457mm - 3500mm(18"-138")
Wall Thickness	6mm-120mm(0.236"-4.72")
Steel Grade	API PSL1:A,B,X42-X100 API PSL2:BM,X42M-X100M ASTM:A139,A252,A53,A572,A671,A672,A691 EN:S235-S450
Length	2.5m-12.2m
Coating	DIN 30670/30678, CSA Z245, AWWA C210



• Seamless Pipe / 无缝钢管

Standards	API Spec 5L, ASTM and other technical requirements by the end user.
Diameter	21.3mm – 914mm(0.5"-36")
Wall Thickness	2.77mm-120mm(0.109"-4.72")
Steel Grade	API PSL1/PSL2-A,B,X42-X100 ASTM A53/A106:Grade A,B,C;A333:Grade1-Grade8;A335:P1-P92 EN 10210/10219/10216:S235-S460,P195GH-16Mo3 DIN1629/17175,JIS G3454/3455/3456
Length	2m-24m
Sour Service	NACE MR0175/ISO 15156



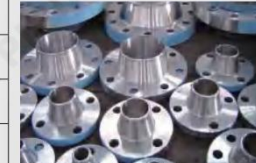
• OCTG / 石油套管

Casing	
Standards	API 5CT, API 5L, API 5B, API RP 5CS
Diameter	114.3mm-508mm(4 1/2"-20")
Wall Thickness	5.21mm-16.13mm(9.50ppf-133ppf)
Steel Grade	H40,J55,K55,N80,L80,C90,C95,T95,C110,P110,Q125
Tubing	
Standards	API 5CT, API 5B, API RP 5CS
Diameter	48.26mm-114.3mm(1.9"- 4 1/2")
Wall Thickness	3.18mm-16mm(2.4ppf-26.1ppf)
Steel Grade	H40,J55,K55,R95,N80,L80,C90,C95,T95,P110,Q125
Drill Pipe, Collar, HW Drill Pipe	
Standards	API 5DP, API 7-1, NS-1, DS-1
Diameter	60.32mm-168.28mm(2 3/8"-6 5/8")
Wall Thickness	7.11mm-27mm(6.65ppf-74.62ppf)
Steel Grade	E,X,G,S



• Fitting & Flange / 管件、法兰

Fitting	
Standards	API,EN,ASTM,DIN,BS,JIS,GB
Available Approved Marine	ABS/BV/LR/DNV/GL/KR,EN10204 3.2MTC
Special Service	Sweet Service, Sour Service,Anti-H2S ,NACE MR 0175/ISO15156
Steel Grade	A234/A182/A105/A350/A430/A860/A694/A815
Produce Process	Hot Forming, Welded by Plate, Cold Forming, Forging by bar
Flange	
Standards	API,EN,ASTM,DIN,BS,JIS,GB
Available Approved Marine	ABS/BV/LR/DNV/GL/KR,EN10204 3.2MTC
Special Service	Sweet Service, Sour Service,Anti-H2S ,NACE MR 0175/ISO15156
Steel Grade	A182/A105/A860/A694
Produce Process	Forging by bar



• Valve / 阀门

Type	Ball/Gate/Globe/Check/Butterfly/Plug/Needle/Diaphragm/Lined Valve, Strainer, etc., Diverse Construction, Forged or Casted, Manual or Actuator Operated
Standards	API, BS, ISO, ASME, AWWA, MSS SP, DIN
Size & Pressure	1/4"-120" ,ASME 150LB-2500LB
Material	CS, S/SS, S/DSS, Al/Bronze, Inconel, Hastelloy, Monel, other Alloys, Cl, Di
Optional Requirements	HP/HT/Cryogenic/Corrosive/Abrasive/Oxygen/Vacuum/ESD Service, Dual Certified 316/L, Fully Killed CS, CRA Cavity Overlay, Norsok M650, FET(SO/SHELL/TA-LUFT), HP Gas Shell Test/TAT, EN1024 3.2, FBE, etc.



• Coating / 防腐产品

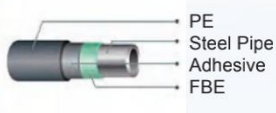
The processing scope of internal coating covers from 4.49" to 102.36", and external coating covers from 2.36" to 102.36" with world advanced highly automatic equipment.

FBE Coating



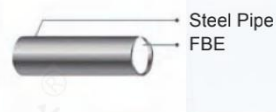
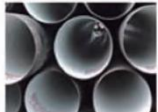
FBE
Steel Pipe

PE/PP Coating



PE
Steel Pipe
Adhesive
FBE

Liquid Epoxy
Coating



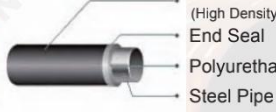
Steel Pipe
FBE

Concrete Weight
Coating



Concrete Layer
Anti-Corrosion Coating
Steel Pipe

Insulation Coating



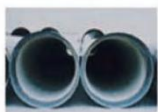
HDPE
(High Density-Polyethylene Pipe)
End Seal
Polyurethane Insulation Layer
Steel Pipe

Marine Corrosion



Marine Corrosion
Steel Pipe

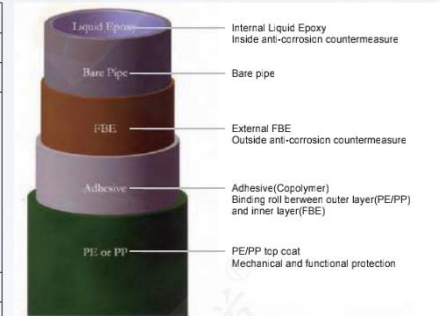
Cement Lining



Steel Pipe
Cement

External Pipe Coating

Diameter	60mm-2600mm (2.36"- 102.36")
Coating Type	FBE, 2PE, 2PP, 3PE, 3PP
Standards	CSA Z245.20-02, SY/T0315-2005, Q/CNPC 8-2002, GB/T 23257-2009, D/N 30670-1991, DIN 30678-1992, SY/T 0413-2002, Q/SY XQ 8-2003, Q/SY XQ 9-2003, CSA Z245.21-02 and other additional technical requirements by end users.
Internal Pipe Coating	
Diameter	114mm-2600mm (4.49"- 102.36")
Coating Type	with liquid coating materials
Standards	API RP 5L2-2002, SY/T 4057-2000, SY/T 0442-2010, Q/SY XQ 10-2003, Q/SY XQ 11-2003 and other additional requirements by end users.



• Concrete Weight Coating

The CWC provide the necessary negative buoyancy during pipeline installation and operation and also provide the necessary mechanical protection for the offshore pipeline coatings. The CWC system consists of iron ore aggregate, sand, cement, water and reinforcing material.

Coating characteristics	CWC can make the pipelines stably maintained in the sea bed, meanwhile offer effective mechanical protection. During production, determination of the different layer density is according to the project technical specifications.
Advantage	Compared with the pipe-in-pipe, the CWC coating save more steel, reduce the labor intensity during pipeline installation and construction as well as saving operation cost.
Raw Material Inspection	ASTM C136, ASTM C117, ASTM C142, ASTM C40, ASTM C123, ASTM C70, ASTM C128, ASTM C127, ASTM C150, BS 12, ASTM A185, ASTM A82, ASTM C171, ASTM C309.
Offline Inspection	
Concrete tensile strength	ASTM C39, BS EN12390-3, BS EN12390-2 (Making and curing)BS EN12390-1 (Specimens dimension)
Diameter	8"- 48"
Wall Thickness	40mm-180mm
Concrete Density	BS EN12390-7
Length	6m-18m
Water absorption rate	BS EN12390-3, BS 1881-122
Shear adhesion	



HISTORY PROJECTS

工程业绩



WEBB DOCK PORT

Project Location: Australia

Client: MCCONNELL.

Contract Duration: 10 Months

Supply Description:

SSAW PIPE PILES, AS 1163 C350LO within UHB coating, Diameter is 914mm-1524mm , 22000Mtons.

FPSO P75&P77 PROJECT

End User: Petrobras.

Location: Brazil

Duration: 5 Months

Description:

SMLS PIPES, ASTM A312 TP304/ASTM A333 GR.8/ASPI 5L GR.B , Diameter is 21.3mm-323.9mm , 1117 Mtons.

DUSLO PROJECT

End User: Technip.

Location: Italy

Duration: 10 Months

Description:

SMLS PIPES, ASTM A335 P11, P22, A333 Gr.6 , Diameter is 168.3mm-406.4mm , 1866Mtons.

PDVSA OIL PROJECT

End User: PDVSA.

Location: Venezuela

Duration: 6 Months

Description:

SMLS STAINLESS STEEL TUBINGS, ASTM A789 UNS S32707, Diameter is 60.3mm-88.9mm , 327 Mtons .





SIEMENS EGYPT PROJECT

End User: SIEMENS.
Location: EGYPT
Duration: 5 Months
Description:
 H BEAMS , JIS G3101 SS400 , H 125X125X6.5X9
 H 200X200X8X12. BEAM C10-C25b , 2659 Mtons.

WOMEY BRIDGE PROJECT

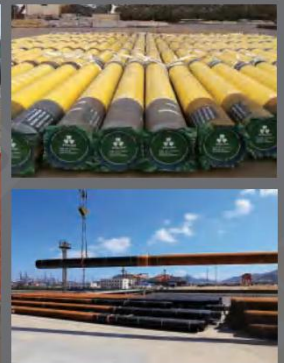
End User: VINCI.
Location: Benin
Duration: 4 Months
Description:
 SSAW PILING PIPES, EN10219 S355JR , Diameter is
 1032, 3680 Mtons.

INDIA PROJECT

End User: BHEL.
Location: INDIA
Duration: 6 Months
Description:
 ALLOY STEEL PLATES, ASTM 387 GR12 CL2 , 16-50mm
 *2000mm*7500-12000mm , 5881Mtons .

BAKHRABAD SIDDIRGONJ TRANSMISSION PIPELINES

End User: GTCL.
Location: Bangaldish
Duration: 6 Months
Description:
 LSAW PILING PIPES, API 5L PSL1 X52 ,
 914mm*12.7/19.05 , 5789 Mtons .





PETRONAS OIL TANK PROJECT

End User: SABIC.
Location: SAUDI ARABIA
Duration: 10 Months
Description:
 STEEL-CLAD PLATES, ASTM A264 (ASTM A240 304L & ASTM A516 GR.70N) , (3.5+58)*3500*12000, (5.5+69)*3200*13260,2275 Mtons.

MECHANICAL INSTALLATIONS WORKS IN LEKKI FREE TRADE ZONE

End User: DANGOTE
Location: NIGERIA
Duration: 5 Months
Description:
 GALVANIZED SMLS PIPES, API 5L GR.B / ASTM A106 GR.C, Diameter is 88.9mm-219.1mm, 1207 Mtons.

SMS, YANASE PROJECT

End User: SAMSUNG
Location: KOREA
Duration: 9 Months
Description:
 SQUARE & RECTANGULAR TUBES, JIS G3466 STKR400 & STKR490, 250*250*10*12000, 250*350*12*12000, 250*400*14*12000, 12735 Mtons.

PIPING SYSTEM PRE-FABRICATION

End User: SK E&C
Location: Myanmar
Duration: 4 Months
Description:
 Pre-fabricated Piping System, ASTM A106 Gr.B & Gr.C, 235 Mtons.



PROJECT REFERENCE

PROJECT NAME	USER	DATE	PRODUCT TYPE	SPEC & GRADE	SIZE	QUANTITY(TONS)
SEWMA HAMRIYAH IPP EXTERNAL PIPING PJT	GE	Aug-Dec, 2019	SMLS PHRS	ASTM A339 P111, P222/P91/P92, ASTM B816	68.3mm*71.1mm	3230
DHAQA TRANSMISSION PIPELINES	GTCL	Aug-Oct, 2019	LSAW HUNG PHRS	API S1, PSL1 X32	762mm*16.68mm	2177
REFINERY LINE MAINTNANCE PROJECT	PATRONAS	Jun, 2019	SMLS PHRS	A333 GR6, ASTM A106 GR. B & GR. C	88.9-610mm *5-49-18.25mm	1154
PAPUA NEW GUINEA SEAPORT PROJECT	WORLEYPARSONS	May-Jul, 2019	JET T & BIRTH STRUCTURE/STEEL SHEET & PIPE PHRS, JOINTING, MODULIST, ETC	AWG D1.1 & A515/4 & AS 3078 GR.300 & ASTM A532 GR. 3	1.5195TMM	5563
SMS/VSANSE	SANSUNG	Apr-Sep, 2019	SQUARE & RECTANGULAR TUBES	JIS G3465 ST4200 & ST4490	250*250*10*12000, 250*250*14*12000, 250*400*14*12000	12725
CHIAHU! EXTERNAL PIPING PJT	GE	Jan-Apr, 2019	SMLS PHRS	A333 GR6, ASTM A106 GR. B & GR. C	48.3mm-406.4mm	1240
PETRONAS OIL TANK PROJECT	SABIC	Sep-2018-Mar, 2019	STEEL-CAD PLATES	ASTM A284	(3.5*58)*3.500*12000, (5.3*59)*3.200*12280	2275
NIGERIA AIRPORT PROJECT	NIGERIA AIRPORT	Aug-Oct, 2018	H BRIMS	ASTM A709 GR.50	HV200*200*20*22, HV400*400*40*28*30	1780
JAWA1 PJT	GE	Aug, 2018	GALVANIZED SMLS PHRS	ASTM A106 GR. B & GR. C	62.3mm-88.9mm	353
SAUDI ARABIA AIRPORT PROJECT	DAEWOO	May-Oct, 2018	SQUARE & RECTANGULAR HOLLOW SECTIONS	EN10210 S355J0H	400*400*16*11800, 300*300*14*12500	5514
VOPAK TERMINAL LESEDI	VOPAK	Aug, 2018	COATED ERW PHRS, FITTINGS, FLANGES	API 5L GR. B, A234 B, A105	188mm-610mm	350
CONTRACT FOR SITE CIVIL CONSTRUCTION AND/OR MECHANICAL INSTALLATIONS WORKS IN LEKKI FREE TRADE ZONE, NIGERIA	DANGOTE	Aug, 2018	GALVANIZED SMLS PHRS	API 5L GR. B / ASTM A106 GR. C	88.9mm*21.9 mm	1207
HALLIBURTON OILFIELD PROJECT	HALLIBURTON	Jun, 2018	SEAMLESS TUBINGS	ASTM A519 GR. A140	114.3*457mm	365
KOC OIL TRANSPORTATION PROJECT	KOC	Mar, 2018	VALVES	API 603/BS EN ISO 15951 & KOC STD MOC-APP-013	3/8" UP	656
BANOCO WHARF PLATFORM	BANOCO	Apr, 2018	JET T & BIRTH STRUCTURE/STEEL SHEET & PIPE PHRS, HEAVY STOCK, (PONTON, ETC)	EN 1000 & AWS D1.1 & ASTM A532 GR.3 & GR.1130/1130/1 Q345D	1.5195TMM	3387
BAKHRABAD SUDIRGOU TRANSMISSION PIPELINES	GTCL	Jan, 2017-May, 2018	LSAW UNDERPHS	API S1, PSL1 X32	914mm*12.7/19.05	5789
INDIA PROJECT	BHEL	Sep-Oct, 2017	STEEL PLATES	ASTM A36 / GR.12 Q.2	16.50mm * 2000mm * 2500, 12000mm	5881
WONEY BRIDGE PROJECT	VINCI	Jun-Oct, 2017	SSAW HUNG PHRS	EN10219 S555R	1032*16*12,500	3680
POVSA OIL PROJECT	PDVSA	Jul, 2017	SMLS SEAMLESS STEEL TUBINGS	ASTM A788 UNS S32707	62.3mm-88.9mm	327
INDIA PROJECT	BHEL	Mar, 2017	STEEL PLATES	A515 GR. 65	146.512*2.2.80	1444
EUROPE PROJECT	ITALY	Jan, 2017	SMLS PHRS	EN 10210 S355J2H	146.512*2.2.80	1235
PIPING SYSTEM PRE-FABRICATION	SK E&C	Dec, 2016	PRE-FABRICATED PIPING SYSTEM	ASTM A106 GR. B & GR. C	1.5195TMM	1659
SIEMENS EGYPT PROJECT	SIEMENS	Nov, 2016	H BRIMS	JIS G3101 S5400	H 125X12506.508 H 200X2008012, BRAM C/D C/D	10
MOROCCO BEND PROJECT	MOROCCO	Oct, 2016	HUBUS	A1068	323.8mm*62.0mm	55
TRUNKLINE REPLACEMENT AND HUBSHAN DIRECT DEPRESSURIZATION PROJECT	ADCO	Sep, 2016	SEAMLESS PHRS AND FITTINGS	ASTM A412 P3416/P316, ASTM A387 W316	33.4mm*27.3mm	610
Chilled Water Pipes & Fittings	KOC	Aug, 2016	CARBON STEEL FORGED FITTINGS	ASTMA105 P15/316/316C	33.4mm*61.3mm	3507
INDIA PROJECT	BHEL	Jun, 2016	SMLS PHRS	A333/S435 P9/PL1/P22/P91/SA106 GR.C	88.9-406.4mm *5-49-18.25mm	10
INDIA PROJECT	COINTEGRATED PRODUCTIONS LTD	May, 2016	AUDY FORGED ROUND BRIMS	GH7/42	OD 160mm	10
MIDDLE EAST CRUDE OIL TREATMENT	FLOUR	Apr, 2016	SMLS PHRS	ASTM A333 GR.6	168.3mm*406.4mm	1816
MAINTNANCE PLATFORM FABRICATION	AUSTRALIA PORT	May, 2016	STEEL STRUCTURE PLATFORM	AS/NZS 3678 GR.350	1.5195TMM	200
VENEZUELA OIL PIPE PROJECT	PDVSA	Feb-May, 2016	SEAMLESS TUBINGS	API 5CT	2.39" RANGE 2	1666
CANADA GAS PLANT PROJECT	FLOUR	Feb, 2016	SSAW HUNG PHRS	ASTM A333 GR.6	33.4mm-61.0mm	1875
BHP PILING PROJECT IN AUSTRALIA	BHP	Dec-2015-Jul, 2016	SSAW HUNG PHRS	ASTM A232 GR.3	9.4mm*12.7/19.05	3059
LOREGAN UREA FERTILIZER PROJECT	LOHDE GAN	Dec, 2015-May, 2016	SEAMLESS STEEL PHRS, GALVANIZED PHRS	ASTMA106 GR. B, A333 GR.6, A339 P11, P22	21.3mm-81.3mm	1180
PERU PROJECT	ODEBRECHT	Dec, 2015-May, 2016	SSAW & LSAW	API S1, PSL1 X32	1239mm*19mm	1655
BLUE DOUHIN UPGRAIDING PROJECT	CND	Nov, 2015-Feb, 2016	SSAW HUNG PHRS	GW/11391 Q345B	610-1100mm*14-50mm	4128
BANGLADESH PIPELINE PROJECT	TTAS	Oct, 2015	SMLS/ERW PHRS	API 5L GR. B / ASTM A106 GR. C	168.3mm-555.6mm	232
LIQUEN PORT EXTENDING PROJECT IN CHILE	CEG	Oct, 2015	SSAW PILING PHRS	API S1, X60	117.6mm-18/22	2119
BARANGARAO HERRY HUB PROJECT IN SYDNEY	TRANSPORT AND INFRASTRUCTURE BUREAU	Sep-2015-Jan, 2016	SSAW & LSAW	AS/NZS 3678 GR. 350	604-1200mm*20-40mm	1318
ALGERIA PIPE PROJECT	SONATRACH	Sep-Dec, 2015	SMLS CARBON & STAINLESS STEEL PHRS	ASTM A333 & A335, ASTM A332 T931G, ASTM A339 P3416, ASTM A387 W316, ASTM A532 GR.2 / ASTM A572 GR.50	21.3mm-406mm	380
TEXAS CITY HARBOR	USA	Sep, 2015	LSAW HOLLOW/ETROW-SECTION PAINTING	ASTM A252 GR.2	1350mm-1650mm*19mm-46mm	481
DUSLO PROJECT	TECHNIP	Aug, 2015	SMLS PHRS	ASTM A333 P11, P22, A333 GR.6	26.7mm-508mm	1866
PBF PROJECT	MCD	Jul, 2015	ERW PHRS	API S1, PSL2 GR.80	508mm*12.7mm	639
TTAS GAS TRANSMISSION & DISTRIBUTION	TTAS	Jul, 2015	SMLS/ERW PHRS	API S1, PSL1 X42 & X46	168.3mm-406.4mm	345
LINE 1 PIPELINE REPLACEMENT PROJECT	KPC	Jun, 2015	SMLS PHRS	API S1, PSL1 X42 & GR. 8	88.9-508 mm	1314
SHELL REFINERY LINE MAINTNANCE PROJECT	SHELL	May, 2015	SMLS PHRS	API S1, X65/A333 GR. 8	62.3mm*21.1mm	777
PROVCTO MATARAMI PROJECT	ODEBRECHT	May, 2015	SSAW HUNG PHRS	ASTM A232 GR.2 / ASTM A572 GR. 50	9.4mm-1.423mm	330
MASTER GAS STATION (ARAWCO)	SAUDI ARAMCO	May, 2015	LSAW UNDERPHS	API S1, PSL2 X70M	1066mm-1239mm	2950
PSO TUBI PROJECT	PETROBRAS	Apr, 2015	3PE SMLS PHRS	API S1, X60/A333 GR. 8	21.3mm-61.0mm	1117
WERB DOCK PORT, MELBOURNE	MCD	Apr, 2014-Jun, 2015	SSAW PILING PHRS	AS 1163 C350 WITHIN UHRS COATING	9.4mm-524mm	22000
HOUSTON PORT	USA	Apr, 2014-May, 201	SSAW PILING PHRS	API S1, X52	1239-1626mm	5268
TESJON PORT	USA	Mar-Oct, 2014	LSAW PILING PHRS	API S1, X60	9.4mm-2400mm	9627
SHELL LNG PORT	CANADA (SHELL)	Feb-Aug, 2014	SSAW PILING PHRS	API S1, X52	762mm	6400



WHY US

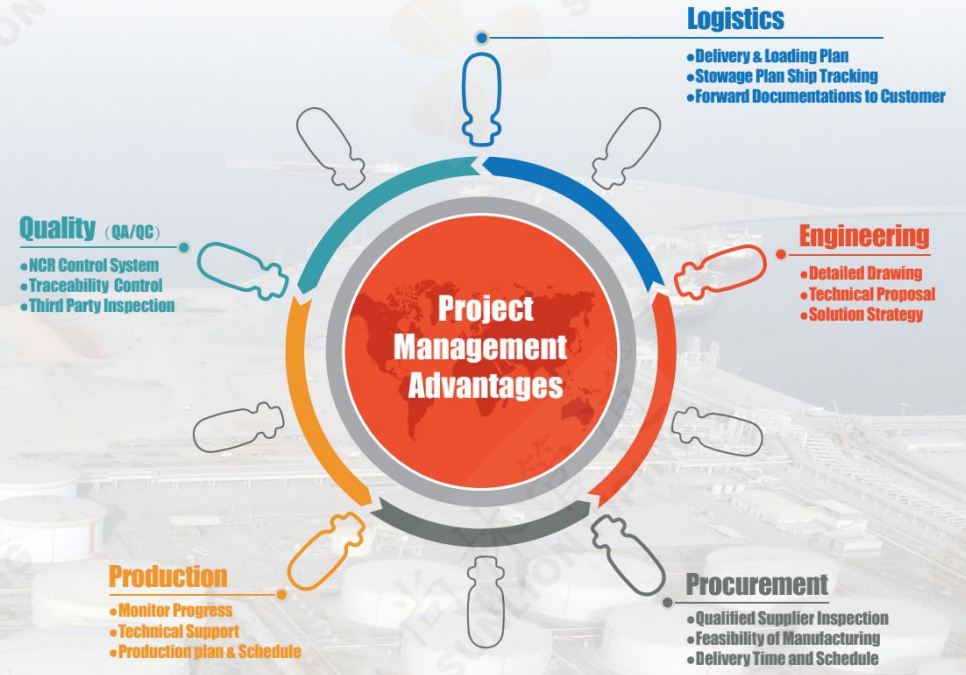
核心竞争力



Project Management Framework / 项目管理架构



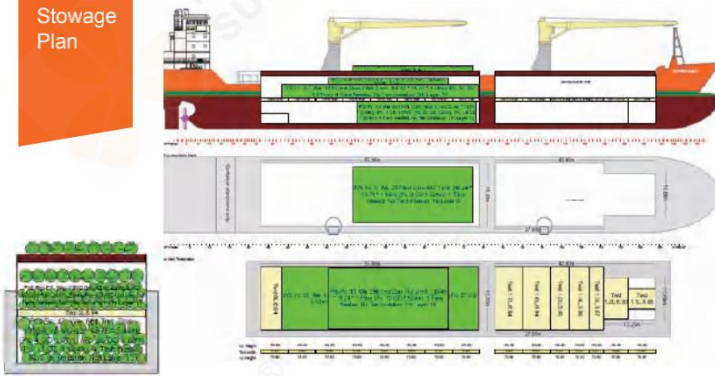
Project Management Advantages / 项目管理优势



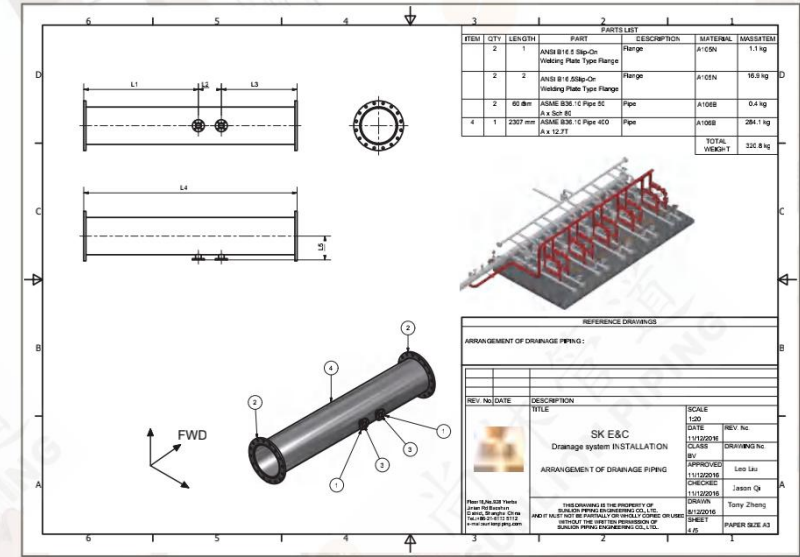
Logistics Solution / 物流方案



Stowage Plan



Detailing Drawing Design / 详图设计



Documentation / 完工资料

Shipping Documents

Loading Survey report

Final stowage sketch

LC documents (if payment by LC)

Quality documents (MDR)



Bill of Lading Commercial Invoice Packing List
Insurance Policy Certificate of Origin

Quality Plan
MPS
ITP
WPS/PQRs
WPQs
Manufacturing Conformance Certificate
Shop Drawings(as-built)
Raw Material Mill Test Certificate
Raw Material Re-test Report
Consumable material mill certificate
Material traceability report
Weld map
NDT report
NCRs
Dimension inspection report
Painting Records
Coat inspection report
Release note

Domestic & Overseas Offices / 国内、国际分公司 (办事处)



SunLion Head Office

- SunLion North America
- SunLion Australia
- SunLion Indonesia
- SunLion Korea
- SunLion India
- SunLion Thailand
- SunLion Hongkong
- SunLion R&D Center
江苏尚大海洋工程技术公司
- SunLion CNAS Laboratory
尚林(苏州)CNAS检测实验室
- SunLion Tianjin Stock Warehouse
沧州尚林管道工程有限公司

MAIN END USERS

主要客户



Professional SunLion Team combined with Professional Chinese Manufacturers, Provides Professional Integrated Supply Chain Solution for EPC Projects!!!

